

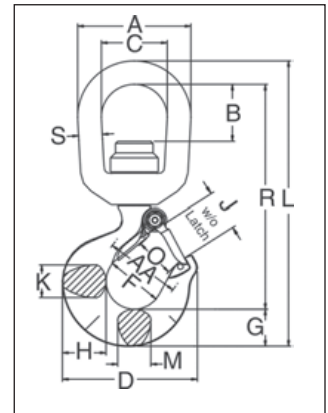
Crosby® Swivel Hooks



L-3322B
Swivel Hooks
with Bearing

New anti-friction bearing design allows hook to rotate freely under load.

- Capacities ranging from 2 through 15 metric tonnes.
- Forged - Quenched and Tempered.
- Proper design, careful forging, and precision controlled quench and tempering gives maximum strength without excessive weight and bulk.
- Low profile hook tip designed to utilize Crosby S-4320 or PL-N latch kit. Simply purchase the latch assemblies listed and shown on pages 121 - 123. Even years after purchase of the original hook, latch assemblies can be added.
- L-3322 hooks incorporate markings forged into the product which address two (2) **QUIC-CHECK®** features:
 - **Deformation Indicators** — Two strategically placed marks, one just below the shank or eye and the other on the hook tip, which allows for a QUIC-CHECK® measurement to determine if the throat opening has changed, thus indicating abuse or overload
 - **Angle Indicators** — Indicates the maximum included angle which is allowed between two (2) sling legs in the hook. These indicators also provide the opportunity to approximate other included angles between two sling legs.



For other swivel hooks designed to rotate under load, see pages 117, 119, 120, 127, 128, 136-139. Use in corrosive environment requires shank and nuts inspection in accordance with ASME B30.10-1.10.4 (b)(5)(c) 2009.

L-3322B Swivel Hooks with Bearing

Working Load Limit (t)*	Hook ID Code*	L-3322B Stock No.†	Weight Each (lbs.)	Dimensions (in.)														Rep. Latch Stock No.	
				A	B	C	D	F	G	H	J	K	L	M	O	R	S		AA**
2	G	1028609	2.5	3.00	1.50	1.75	3.59	1.50	1.00	1.16	1.06	.88	7.64	.88	1.00	6.01	.63	2.00	1096421
3	H	1028618	3.8	3.50	1.56	2.00	4.00	1.62	1.13	1.31	1.19	.94	8.60	.94	1.09	6.72	.75	2.00	1096468
5	I	1028627	7.0	4.00	1.56	2.25	4.84	2.00	1.44	1.63	1.50	1.31	10.32	1.13	1.36	8.00	.88	2.50	1096515
7	J	1028636	14.0	5.00	1.94	2.75	6.27	2.50	1.81	2.06	1.78	1.66	12.84	1.44	1.61	9.90	1.13	3.00	1096562
11	K	1028645	22.3	5.62	2.05	3.12	7.54	3.00	2.25	2.63	2.41	1.88	15.24	1.63	2.08	11.74	1.25	4.00	1096609
15	L	1028654	36.0	7.12	3.62	4.10	8.33	3.25	2.59	2.94	2.62	2.19	18.64	1.94	2.27	14.41	1.50	4.00	1096657

* Proofload is 2.5 times working load limit. Designed with a 4.5 to 1 design factor. ** Deformation Indicators. † Supplied with latch attached.