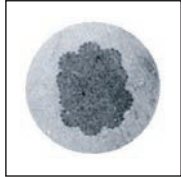




S-505 Swaging Sleeve

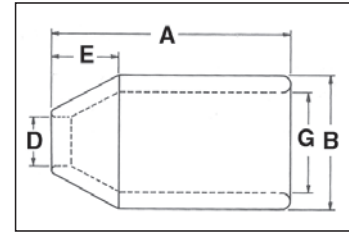


Cross Section of Swaged Sleeve



Scan this QR code with your smart device to view our QUIC-PASS Swaging System video.

- For Flemish eye wire rope splicing.
- Designed for low temperature toughness.
- Resists cracking when swaged (equals or exceeds stainless steel sleeves).
- Special processed low carbon steel.
- "COLD TUFF"® for better swageability.
- Can be stamped for identification after swaging without concern for fractures when following these directions.
 - Use round corner stamps to a maximum depth of 0.015 in. (1/64). The area for stamping should be on the side of the sleeve in the plane of the sling eye, and no less than 0.250 in. (1/4) from either end of the sleeve.
- Standard Steel Sleeve terminations have efficiency ratings as follows based on the catalog strength of wire rope.



NOTE: See Page 45 for dimensional information.

S-505 Termination Efficiency		
Size (in.)	Type of Wire Rope *	
	IWRC	FC
1/4 - 1	96%	93%
1-1/8 - 2	92%	89%
2-1/4 and Larger	90%	87%



**** NOTE: S-505 Standard Sleeves are recommended for use with 6 x 19 or 6 x 37, IPS or XIP (EIP), XXIP (EEIP), RRL, FC or IWRC wire rope. Before using any National Swage fitting with any other type lay, construction or grade of wire rope, it is recommended that the termination be destructive and documented to prove the adequacy of the assembly to be manufactured.**

National QUIC-PASS® Swaging System

"The Next Generation in Swaging Systems"

QUIC-PASS®

The **QUIC-PASS**® swaging system allows "Flemish style" wire rope terminations to be swaged in only two passes.

This is accomplished while maintaining currently published efficiency ratings and utilizing National Swage S-505 Standard "COLD TUFF"® Steel Sleeves.

- Allows the swaging process to be completed in just two passes. Resulting in a 50-75% reduction in the number of passes required with conventional swaging systems.
- Allows the dies to close completely with each pass, resulting in...
 - An increase in overall swaging process efficiencies (the job can be performed quicker).
 - A reduction in the complexity of swaging (the concern for excess flashing between dies has been eliminated).
 - A reduction in training time needed for operators (more user friendly).
- The finished sleeve has a "Hex" appearance that provides a **QUIC-CHECK**® look to determine if the termination has been swaged and provides a flat surface that allows for ease of I.D. stamping on the finished sleeve.

For additional swaging information, please refer to the Wire Rope End Terminations User's Manual.

National Steel Swaging Sleeves

S-505 COLD TUFF® Standard Steel Sleeves

S-505 Standard Steel Sleeve Specifications												Swager / Die Data		
S-505 Stock No.	Rope Size		Weight Per 100 (lb)	Pkg. Qty.	Before Swage Dimensions (in)					Maximum After Swage Dimensions (in)		Standard Round Dies		QUIC-PASS Dies
	(in)	(mm)			A	B	D	E	G	Standard Die	QUIC-PASS Die	Die Description	Standard Die Stock No.	QUIC-PASS Die Stock No.
1041063	1/4	6-7	5	250	1.00	.66	.31	.28	.47	.57	.565	1/4 Taper	1197528	1923530
1041090	5/16	8	14	200	1.50	.91	.44	.44	.62	.75	.769	3/8 Taper	1192364	1923551
1041107	3/8	9-10	14	100	1.50	.91	.47	.39	.66	.75	.769	3/8 Taper	1192364	1923551
1041125	7/16	11	33	50	2.00	1.22	.55	.65	.85	1.01	1.016	1/2 Taper	1192408	1923572
1041143	1/2	13	29	50	2.00	1.22	.63	.56	.91	1.01	1.016	1/2 Taper	1192408	1923572
1041161	9/16	14	64	25	2.75	1.47	.69	.63	1.03	1.24	1.247	5/8 Taper	1192444	1923593
1041189	5/8	16	56	25	2.75	1.47	.75	.63	1.09	1.24	1.247	5/8 Taper	1192444	1923593
1041205	3/4	18-19	88	20	3.19	1.72	.91	.84	1.28	1.46	1.475	3/4 Taper	1192462	1923614
1041223	7/8	22	131	10	3.56	2.03	1.03	1.00	1.53	1.68	1.738	7/8 Taper	1192480	1923635
1041241	1	25-26	195	10	4.00	2.28	1.16	1.13	1.72	1.93	1.955	1 Taper	1192505	1923656
1041269	1-1/8	28-29	260	Bulk	4.81	2.50	1.28	1.25	1.94	2.13	2.170	1-1/8 Open 1st Stage 2nd Stage	1192523 1192541	1923677
1041287	1-1/4	31-32	355	Bulk	5.19	2.78	1.44	1.41	2.16	2.32	2.405	1-1/4 Open 1st Stage 2nd Stage	1192621 1192587	1923698
1041303	1-3/8	34-35	423	Bulk	5.81	3.00	1.56	1.56	2.38	2.52	2.610	1-3/8 Open 1st Stage 2nd Stage	1192667 1192621	1923717
1041321	1-1/2	37-38	499	Bulk	6.25	3.25	1.69	1.69	2.63	2.71	2.835	1-1/2 Open 1st Stage 2nd Stage	1192649 1192667	1923736

Note: Fittings designed only to be used on exact sizes listed.

S-505 COLD TUFF® Standard Steel Sleeves

S-505 Standard Steel Sleeve Specifications											Swager / Die Data					
S-505 Stock No.	Rope Size		Weight Per 100 (lb)	Pkg. Qty.	Before Swage Dimensions (in)					Maximum After Swage Dimensions (in)	Die Description	Stock No.				
	(in)	(mm)			A	B	D	E	G			500 Tons 1000 Tons 1500 Tons 5x7	Front Load		Side Load	
											1500 Ton 6x12	3000 Ton 6x12	1500 Ton 6x12	3000 Ton 6x12		
1041349	1-3/4	44-45	805	Bulk	7.25	3.84	1.94	1.97	3.13	3.10	1-3/4 Open 1st Stage 2nd Stage	1192685 1192701	—	—	—	—
1041367	2	50-52	1132	Bulk	8.50	4.38	2.25	2.25	3.63	3.56	2 Open 1st Stage 2nd Stage	1192729 1192747	—	—	—	—
1041385	2-1/4	56-57	1936	Bulk	9.56	5.03	2.50	2.53	4.03	4.12	2-1/4 Open 1st Stage 2nd Stage	1192765 1192783	1191089 1191043	1191089 1191043	—	1195085 1195067
1041401	2-1/2	62-64	2352	Bulk	10.50	5.50	2.75	2.81	4.50	4.50	2-1/2 Open 1st Stage 2nd Stage	—	1191061 1191089	1191061 1191089	1195370 1195469	1195076 1195085
1041429	2-3/4	68-70	2800	Bulk	11.50	5.75	3.00	3.09	4.75	4.70	2-3/4 Open 1st Stage 2nd Stage	—	1191034 1191052	1191034 1191052	1195389 1195478	1195094 1195101
1041447	3	75-76	2940	Bulk	12.00	6.00	3.25	3.38	5.00	4.96	3 Open 1st Stage 2nd Stage	—	1193201 1193229	1193201 1193229	1195398 1195487	1195110 1195129
1041483	3-1/2	87-89	4640	Bulk	14.00	7.00	3.88	3.94	5.84	5.77	3-1/2 Open 1st Stage 2nd Stage	—	1193247 1193265	1193247 1193265	—	1195138 1195147
1041492	3-3/4	93-95	5500	Bulk	15.00	7.50	4.06	4.25	6.31	6.23	3-3/4 Open 1st Stage 2nd Stage	—	—	1191114 1191132	—	1195263 1195272
1041508	4	100-105	6800	Bulk	16.00	8.13	4.38	4.50	6.81	6.69	4 Open 1st Stage 2nd Stage	—	—	1191150 1191178	—	1195156 1195165
1041526	4-1/2	112-114	10000	Bulk	18.00	9.13	4.88	5.06	7.66	7.45	4-1/2 Open 1st Stage 2nd Stage	—	—	1191187 1191203	—	1195174 1195183

Note: Fittings designed only to be used on exact sizes listed.